

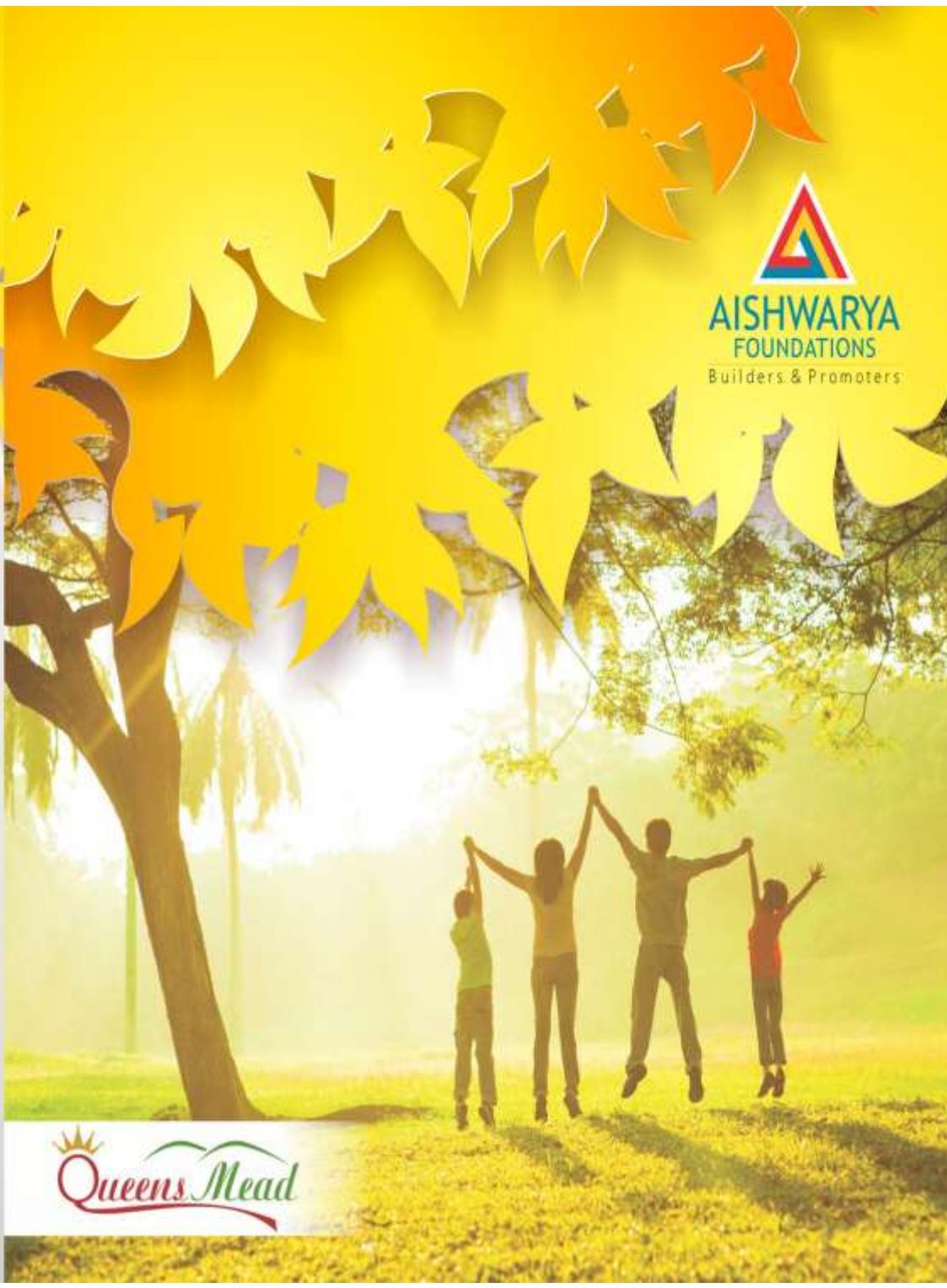
Location Map

Contact:
 99942 08180
 73736 89999
 90420 08180



Adm. Off: 396, Basement, Roma's Enclave, Thodagam Road
 (Opp. Indian Oil Petrol Bunk) R.S. Puzar, Coimbatore - 641 002
 Ph: 0422 2555656
 E: info@aishwaryafoundations.com

Architects : *Classique Building Engravers, Coimbatore*
 Structural Engineers : *M.P. Chandramohan. M.E., Design Home, Coimbatore*



Queens Mead

About Us

Aishwarya Foundations, one of the pioneers in the construction industry for the past 16 years, previously under the name of S. Ishwarya & Co., have built residential and commercial projects for over 3 lakh square feet that have stood the test of time.

Aishwarya Foundations, now builders and promoters of affordable housing, have completed their first project, Cadburie, in a record 15 months, a dream come true residential apartment complex of about 12,000 square feet, comprising of 8 flats at Poompukar Nagar, P & T Colony Road, Kavundampalayam and has been occupied by the happy residents.

QUEEN'S MEAD is the second project of 18,500 square feet, an apartment complex consisting of 16 Premium 2 BHK Apartments at Vellakinar Pirivu, opposite to Sree Vatsa Gardens, just 250 metres off Mettupalayam Road. This Apartment comes with all the latest utility features and amenities and is situated ideally in close proximity to leading institutions, departmental stores, banks, hotels and hospitals.

Aishwarya's QUEEN'S MEAD – the promise of city living in a better urban environment!



Specification

Structure: Earthquake resistant RCC Frame with ISI Grade TMT Steel.

Walls: 9" thick main walls and 4.5" thick partition walls with fly ash bricks.

Flooring: All rooms vitrified tile floors, except Toilet.

Joineries: Entrance Door with teak wood frame and membrane pressed paneled shutters with melamine polish finish & other doors with country wood frames and membrane pressed paneled shutters paint finish.

Window: UPVC Windows with Mosquito Sliding Shutters & M.S. Safety Grills.

Kitchen: Granite Cooking Platform with single bowl S.S. Sink. Wall dadoing with colored Ceramic tiles up to 20" height & Modular Kitchen.

Toilets: Anti skid ceramic floor finish and wall dadoing with ceramic tiles up to 70" height.

Plumbing: Sanitary fittings with White colored Parryware or equivalent. Wall mixture and other C.P. Fittings.

Electrical: Three phase power connection for each flat with concealed wiring of ISI make and modular switches of ISI make. Necessary TV, Telephone, AC and UPS provisions.

Painting: Putty and emulsion finish for interior walls and white cement with exterior emulsion finish for exterior walls.

Staircase & Lobby: Granite floor finish with S.S. Hand rails.

Terrace: Weathering Course with suruki, lime mortar and finished with pressed clay tiles.

Water supply: Adequate storage sump, overhead tank for bore well and drinking water. Drinking water tap point at kitchen.

Materials: All materials used for construction are as per ISI Standards and Specifications.

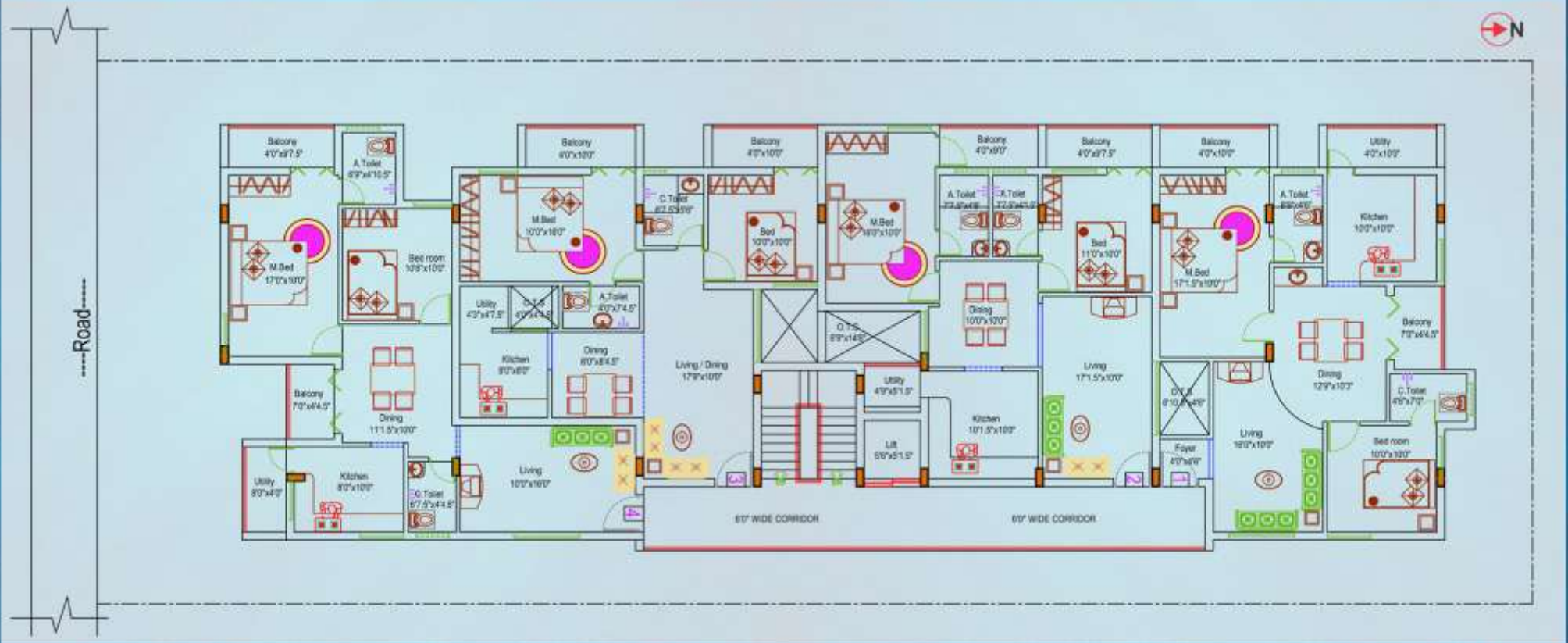
Vasthu: 100% Vasthu compliance.



Typical Floor Plan



Typical Floor Plan




Queens Mead

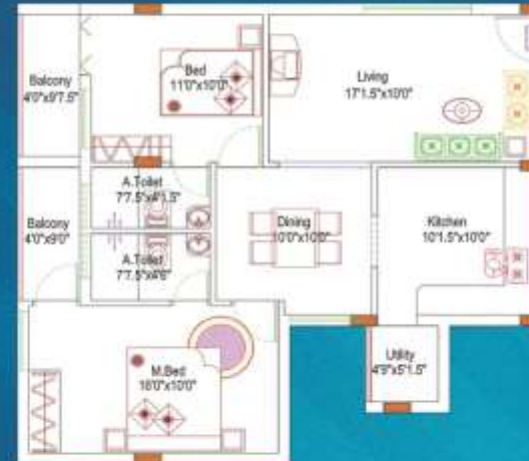
2 BHK
Premium
Apartments

Location:
Vellakinar Pirivu, Off. Mettupalayam Road
(Opp. to Sreevatsa Garden)





FLAT NO: 1



FLAT NO: 2



Type : 2 BHK
Area : 1232 sqft.
Facing : East facing



Type : 2 BHK
Area : 1160 sqft.
Facing : East facing



FLAT NO. 3

FLAT NO. 4



Type : 2 BHK
 Area : 1088 sqft.
 Facing : East facing



Type : 2 BHK
 Area : 1156 sqft.
 Facing : North facing





Special Features



Modular Kitchen



Intercom Facility



Wardrobe for one Master Bedroom



Video door phone



Lobby Smart Access Control

Payment Schedule

- Initial Payment for booking 5%
- At the time of foundation completion 20%
- At the time of Silt Floor Slab completion 5%
- At the time of Ground floor Slab completion 5%
- At the time of First floor Slab completion 5%
- At the time of Second floor Slab completion 5%
- At the time of Third floor Slab completion 5%
- At the time of Brick Work completion 15%
- At the time of Plastering Work completion 15%
- At the time of Painting completion 15%
- At the time of hand over Key 5%

Extra Cost

- ▶ Stamp duty & Registration Fees
- ▶ Water Supply
- ▶ 3 Phase EB
- ▶ Assessment Charges
- ▶ UGD
- ▶ Service Tax

Close to:

- ▶ Leading Schools & Institutions
- ▶ Departmental Stores
- ▶ Banks & ATM
- ▶ Hospitals
- ▶ 250 mtrs from MTP Road



Features



24 hrs water supply



Automatic V3F Lift



Community Hall cum Gym



Covered Car Parking



Auto-start genset for common areas, lift & 500W power backup for each apartment

Completed Project



Location : Kavundampalayam (Poonpukur Nagar)

